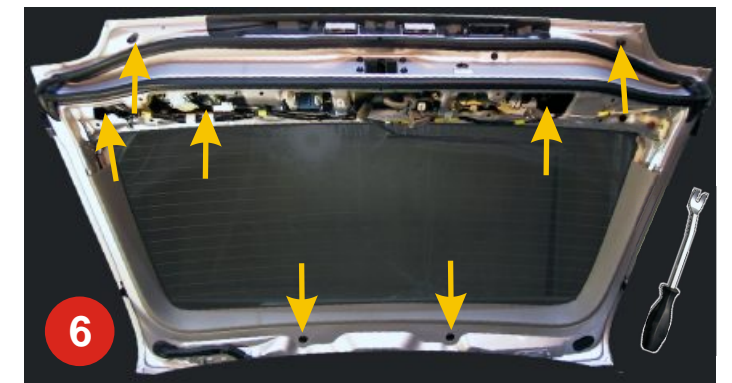
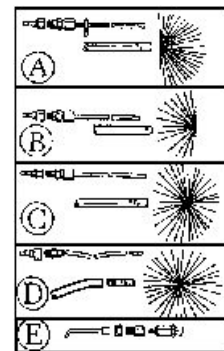
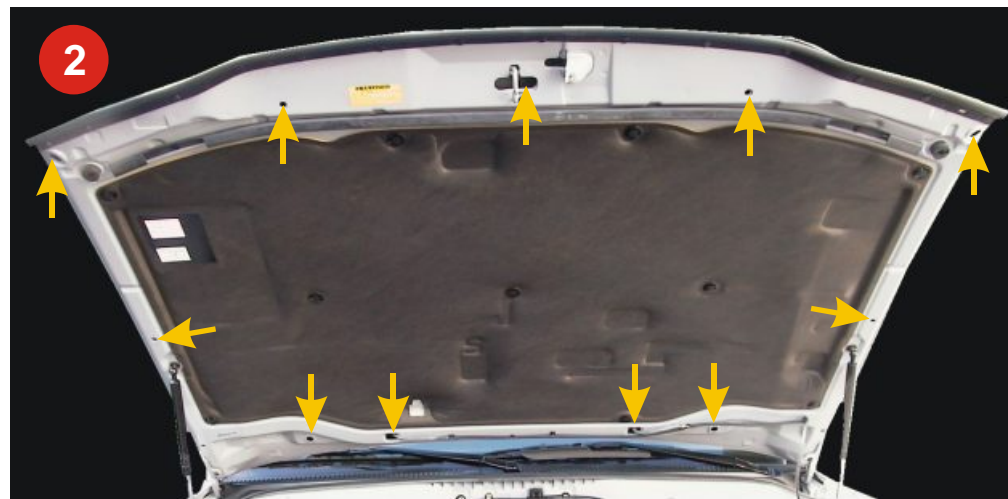
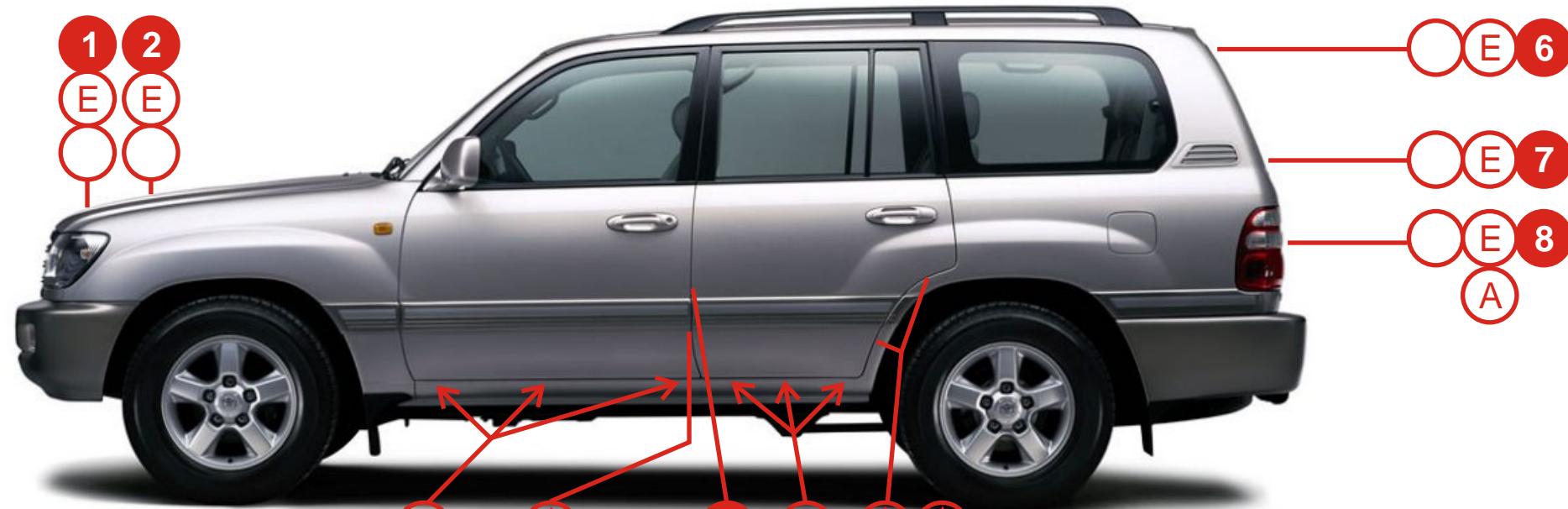


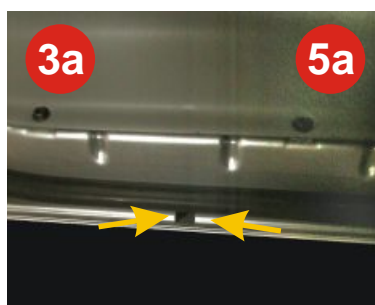


**Geveko Industri AB**  
Box 13007 • SE-402 51 GÖTEBORG, Sweden

# Toyota LandCruiser 100 / 98-



x 6



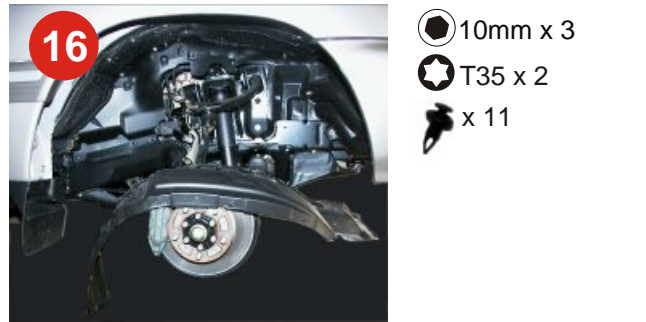
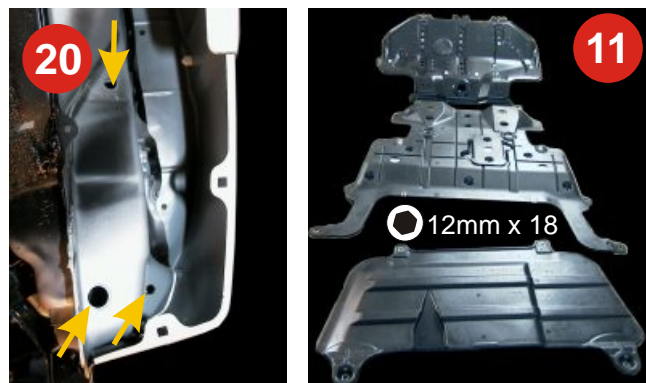
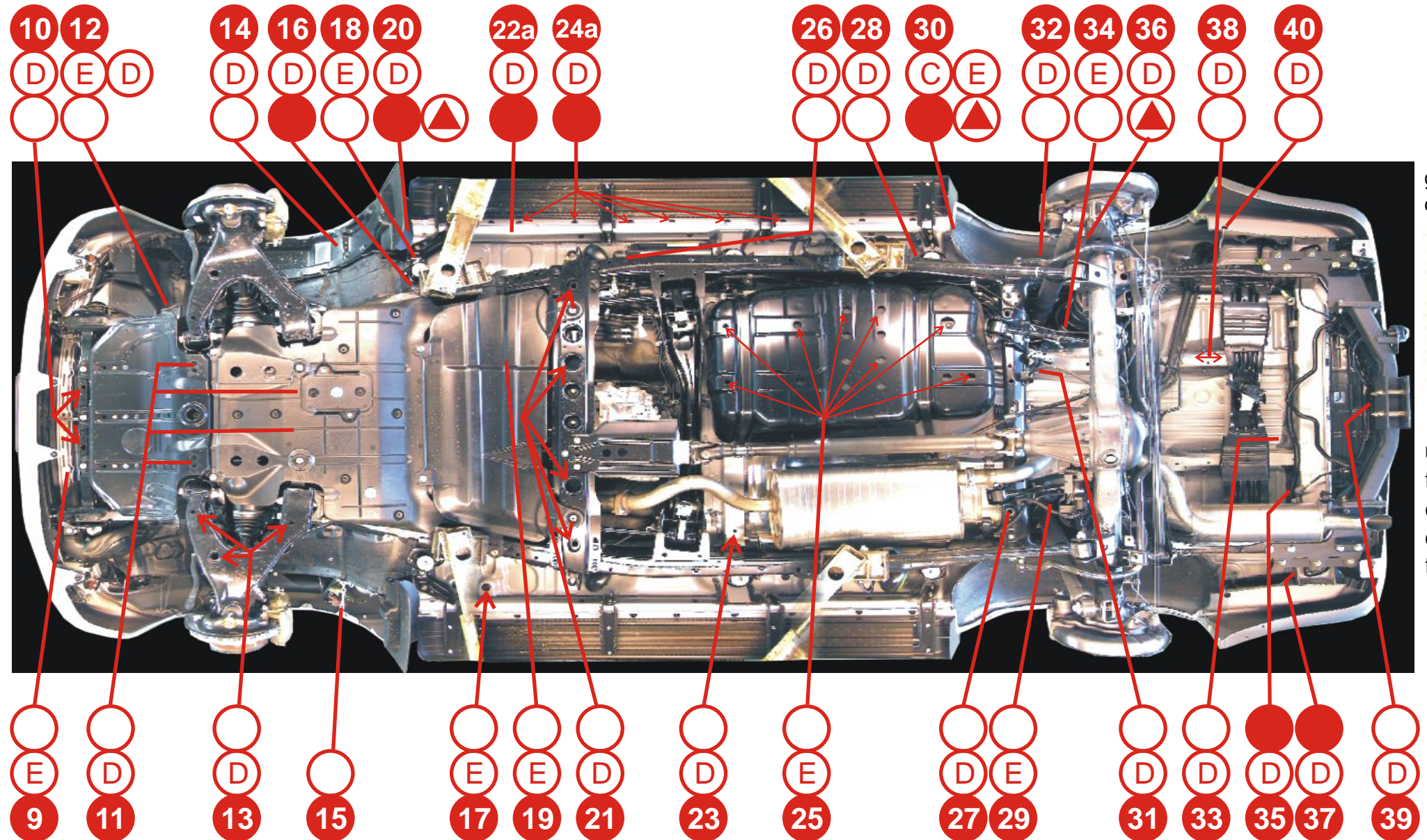
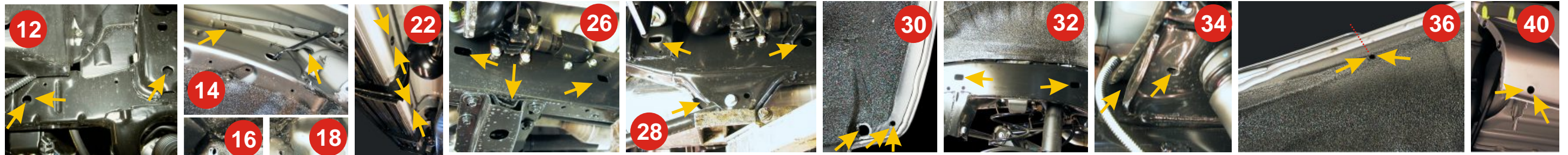
T25 x 2

- |                              |                                  |                                     |                                |
|------------------------------|----------------------------------|-------------------------------------|--------------------------------|
| ○ Befintligt hål             | ○ Existing hole                  | ○ Valmiit reijät                    | ○ Vorhandenes Loch             |
| ● Befintligt pluggat hål     | ● Existing plugged hole          | ● Valmiit tulppattavat reijät       | ● Vorhandenes verstopftes Loch |
| ⊕ Hål som borras             | ⊕ Hole to be drilled             | ⊕ Porattavat reijät                 | ⊕ Loch bohren                  |
| ⊕ Hål som borras och pluggas | ⊕ Hole to be drilled and plugged | ⊕ Porattavat ja tulppattavat reijät | ⊕ Loch bohren und verstopfen   |

1 2 3 4 5 6 7 8 9 10 11



# Toyota LandCruiser 100 / 98-



glove compartment



use special tool to the dismounting of the spare tyre.

